

σs6 Current Monitor™

SYSTEM OVERVIEW

Visualize Surface Currents in Real-time.

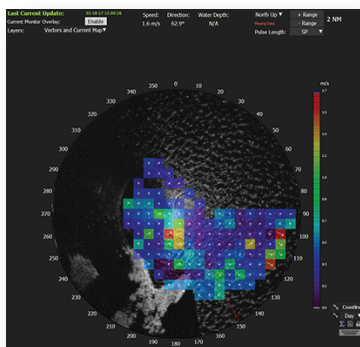
sigma S6 Current Monitor™ is a radar-based, monitoring system that delivers ocean surface current data with high spatial resolution to aid in the management of marine-based activities such as predicting oil slick drift patterns, enhancing navigational safety, and protecting vulnerable coastlines. As a 'dry' complement to buoys, **Current Monitor™** requires no in-water assets or associated service costs.

Current Monitor™ can also display bathymetry information from fixed locations in shallow water up to approximately 30m water depth to assist in the monitoring of sedimentation and erosion processes. It provides insight into small-scale dynamic processes helping to better understand complex current fields that affect wave behaviour and ultimately any smaller scale processes, such as eddies either offshore or in the coastal zone.

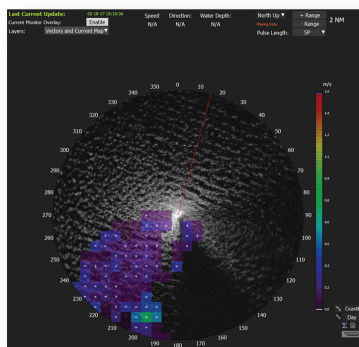
Current Monitor™ maps are useful in supporting operational decisions for the offshore industry, port operations as well as coastal authorities. Bathymetry maps, updated on a short time intervals are valuable to better understand morphodynamic changes, for example, natural erosion and deposition over time or due to events such as storms.

High spatial resolution is in the range of 50m-200m for parameters like Surface Current Speed, Surface Current Direction, and Bathymetry.

To determine high resolution surface currents environmental conditions like minimum wind speed of 3 m/s and a minimum wave height of about 0.5 m – 0.75 m is required to produce results.



The arrows are showing the surface current field and direction. Surface currents around coastal regions and islands are clearly visible.



The user can choose to display the surface current speed with **color coding**. In this image, the displayed color coding shows surface current speeds ranging from 0.2m/s (purple) to 1.2m/s (yellow).

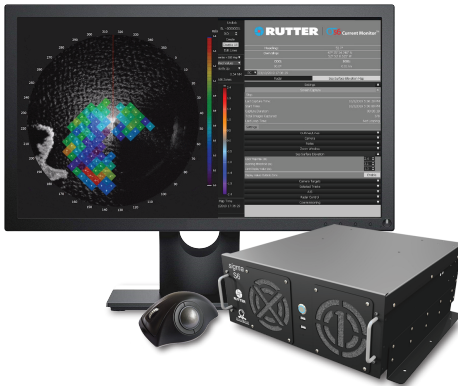
Sigma S6 Current Monitor™

WHAT IS INCLUDED:

sigma S6 Current Monitor™

- Marine Certified Hardware (IEC 60945 Ed. 4 (2002-08))
- *sigma S6* Radar Data Processor (Desktop or Rack Mountable)
- 24" Rack Mountable/Desktop Monitor (alternate sizes available)
- Trackball Unit (Desktop or Console Mountable)
- *sigma S6* SeaView display software
- Automatic Screen Recording in selectable time intervals and formats (JPEG, PNG or AVI)
- Supports NMEA Tracked Target Message (TTM)
- Remote client capability
- Computer-Based Training (CBT) package
- *sigma S6 Connect*: Standard radar image formats (GeoTIFF, PNG, JPEG) and targets (GML, KML, DXF, ESRI)

Since 1998, **Rutter** has been leading innovation in radar image processing for the maritime industry worldwide. Our comprehensive *sigma S6* product suite, whether as individual systems or in combination, provides mariners with a full range of tools enabling them to go farther, faster, safer and more economically than ever before.



Sigma S6 Suite

Current Monitor™
Ice Navigator™
Oil Spill Detection
Small Target Surveillance
WaMoS®II
WaveSignal™
WaveVision™

For more information on **Rutter** and our revolutionary products, please visit www.rutter.ca or talk to one of our sales associates. To arrange a call or meeting, please email sales@rutter.ca.